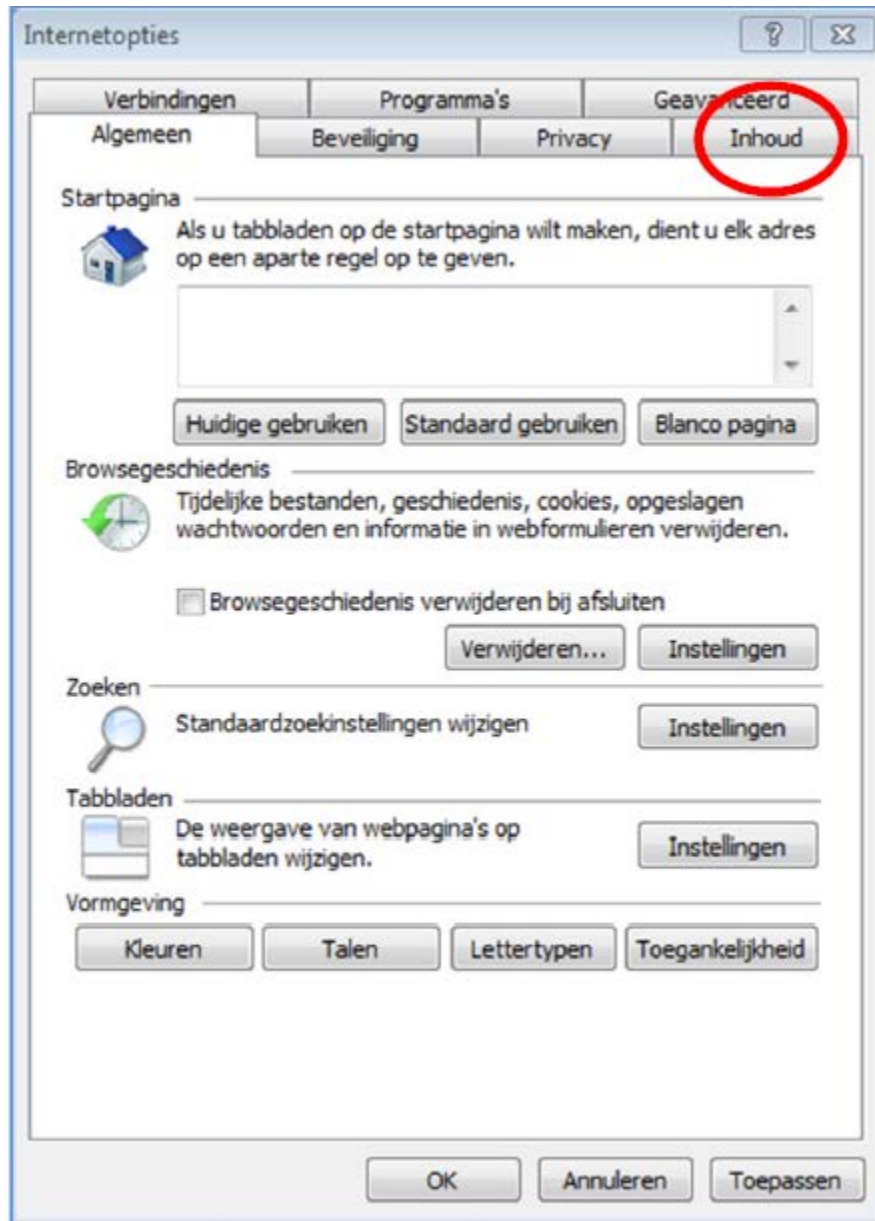
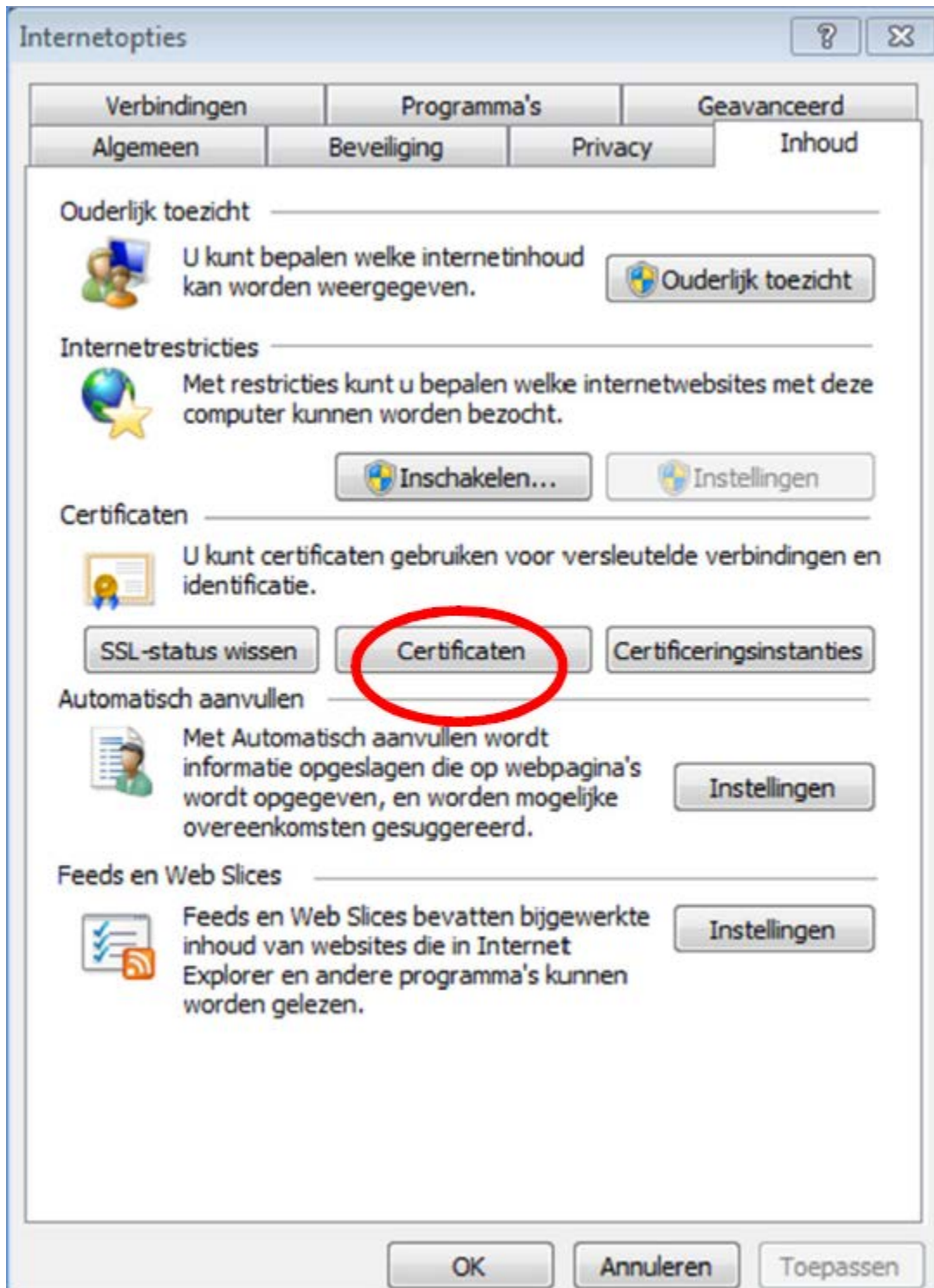


Kies in de browser menu bovenin voor "Extra" (indien dit niet zichtbaar is druk op de "ALT" toets, het menu verschijnt dan) en kies "Internet Opties".

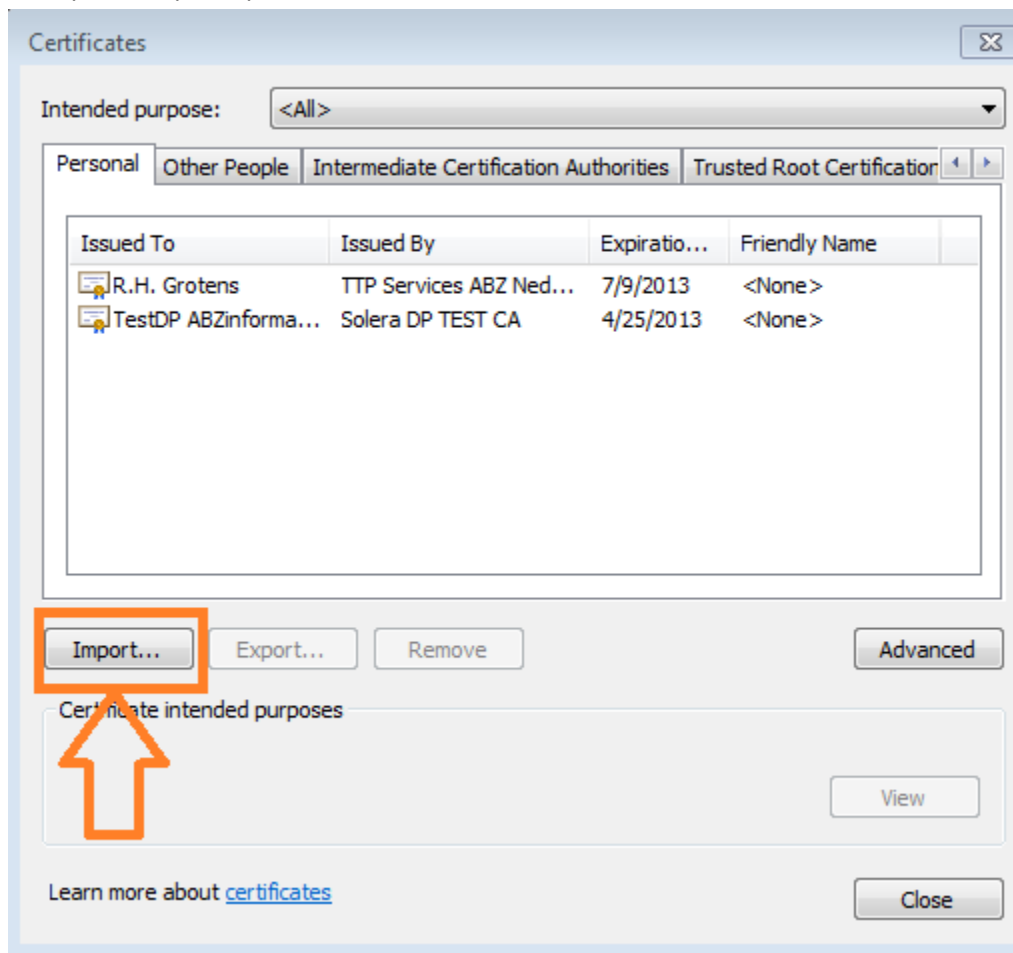
Kies dan het tabblad "Inhoud".



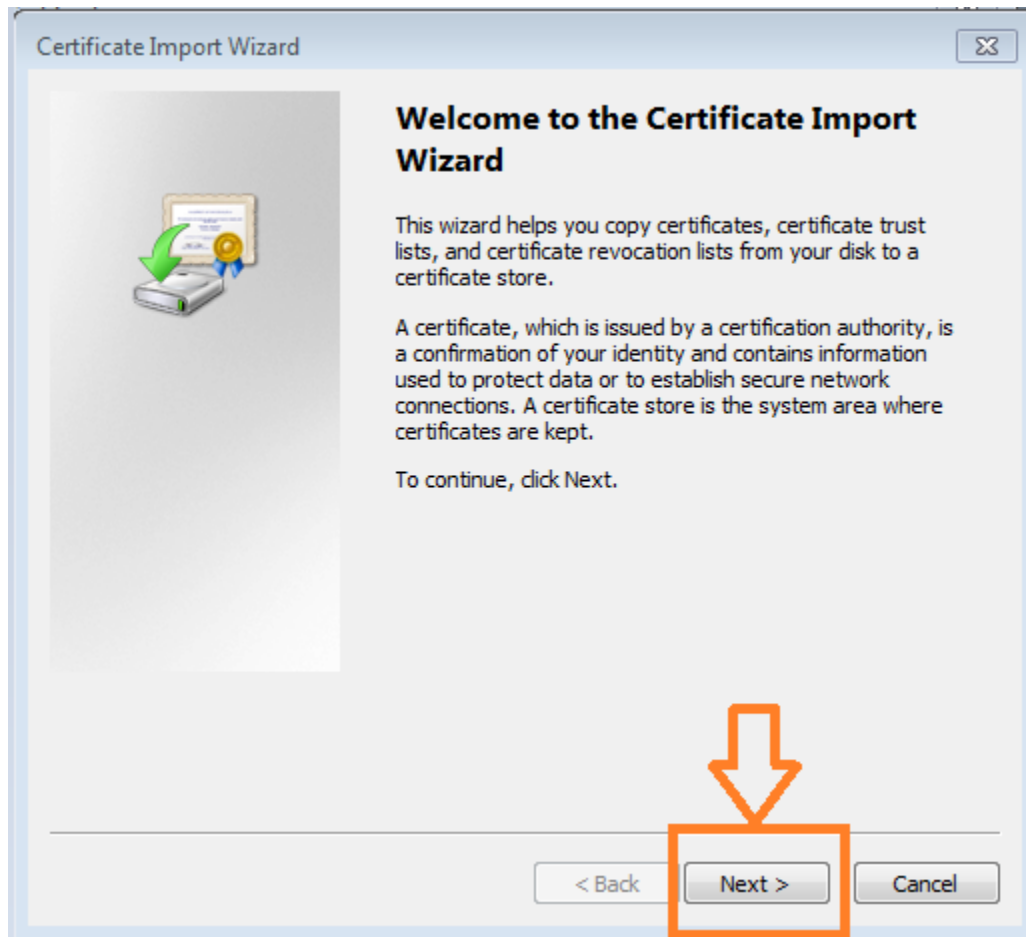
Klik dan op de knop Certificaten:



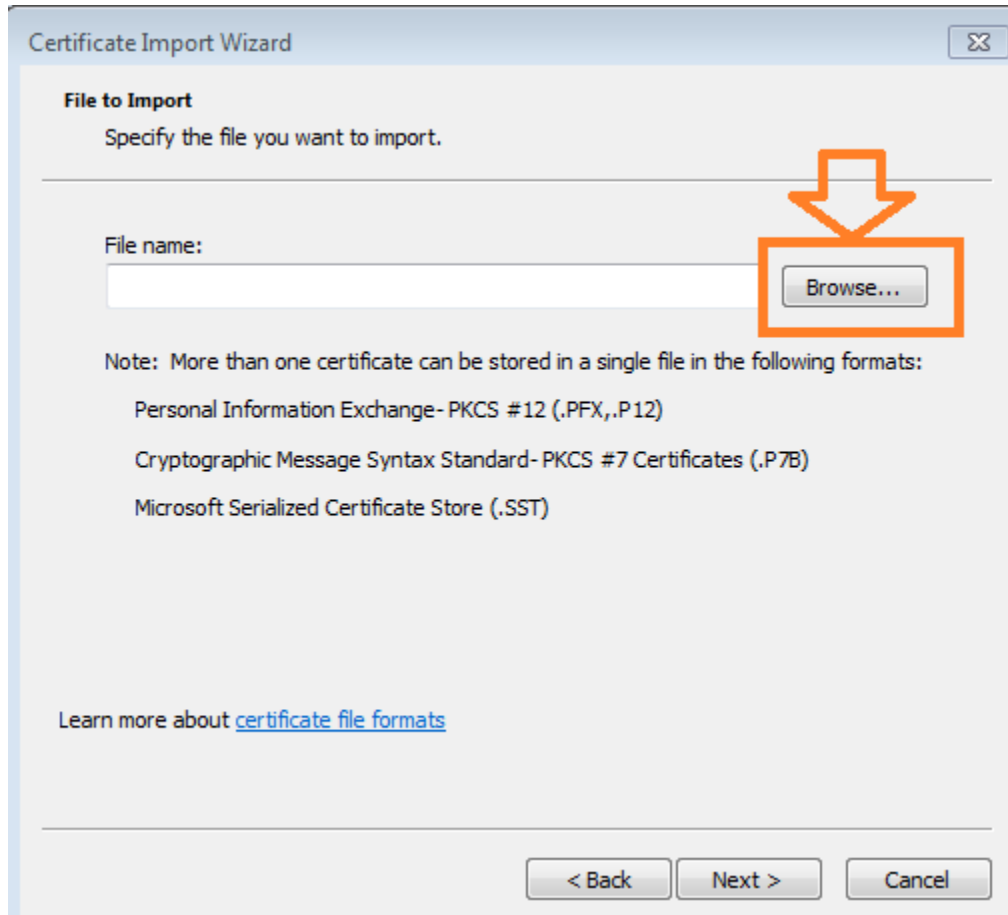
Klik op de knop "Importeren":



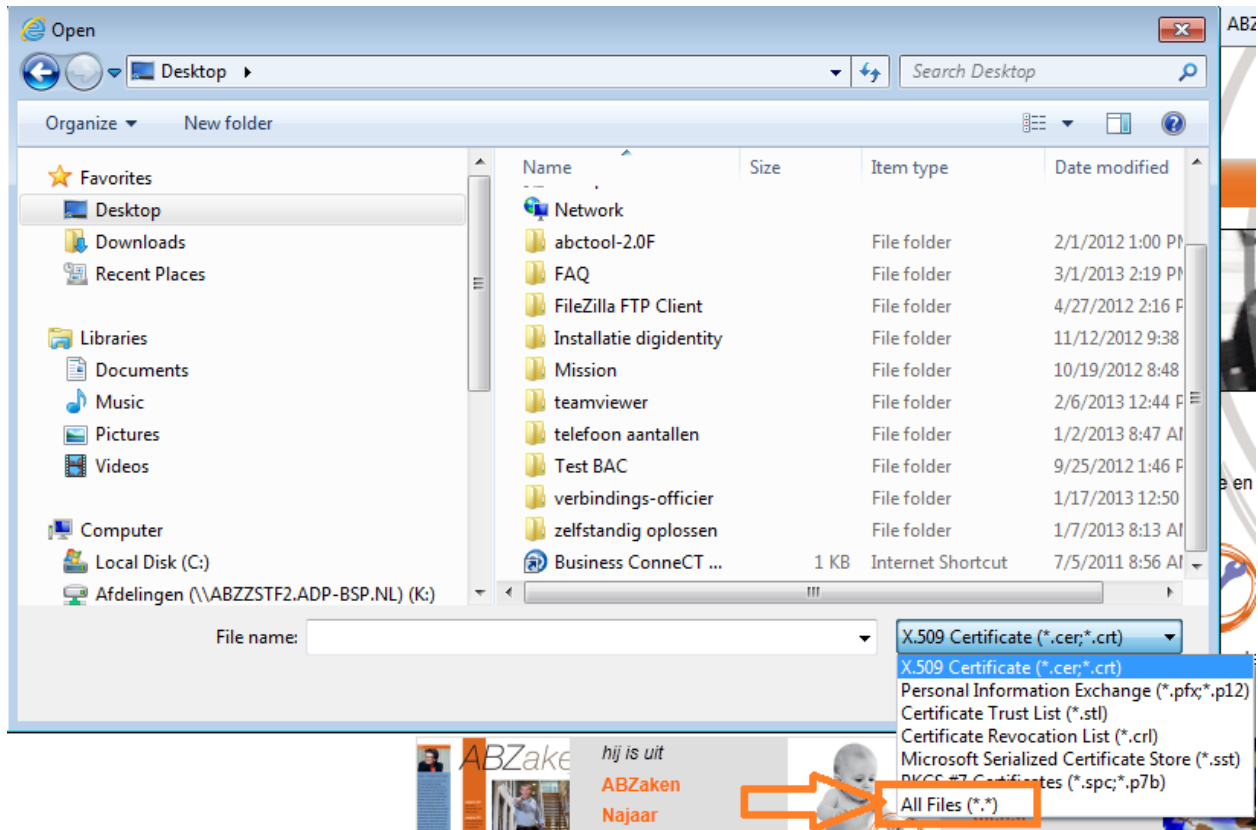
Klik dan op knop "Volgende/ Next":



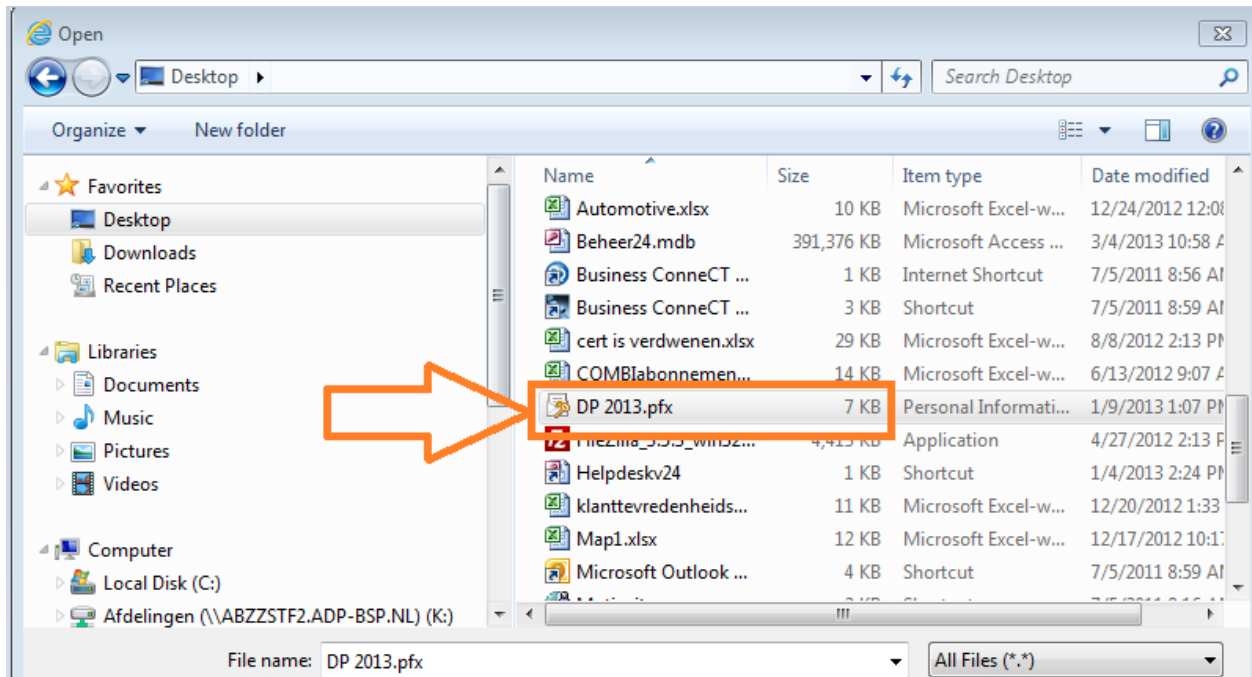
U klikt op de knop “Bladeren /Browser” en selecteert de locatie waar de kopie van uw Digitaal Paspoort is opgeslagen:



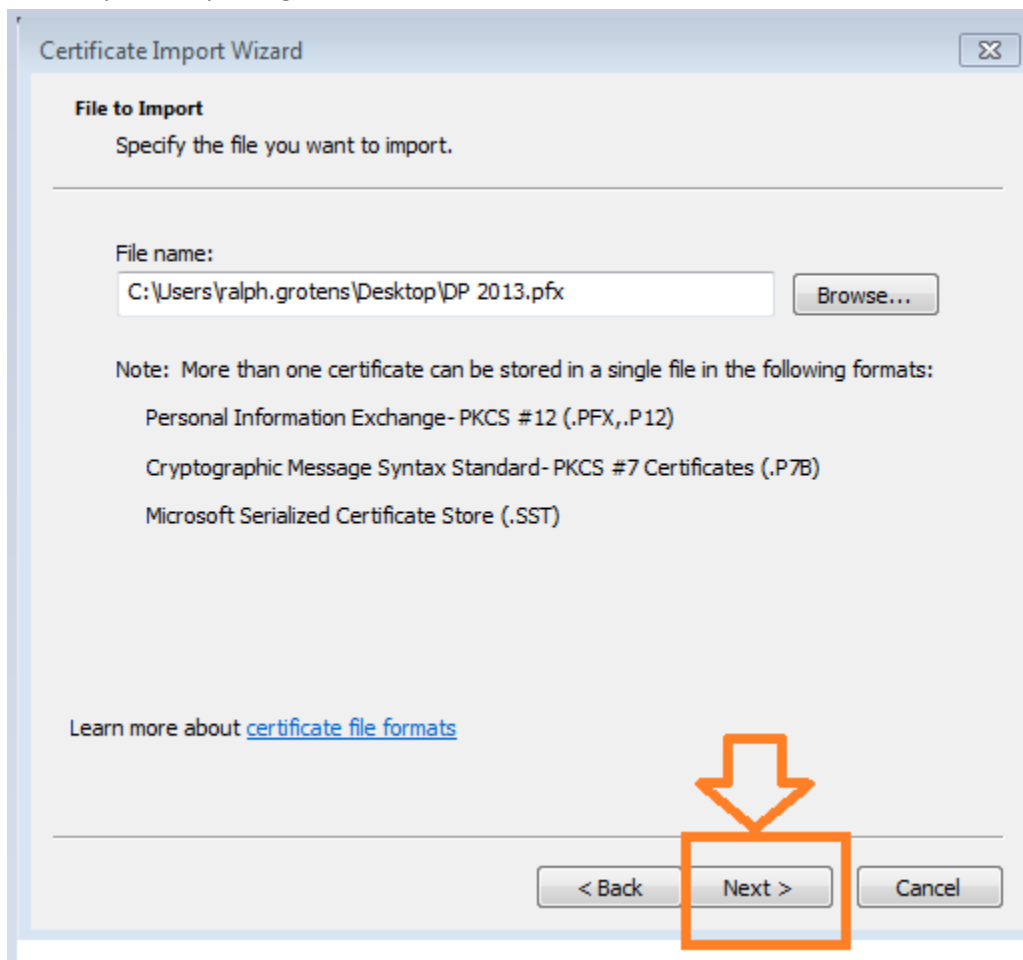
Klik rechts onderin uw scherm "All Files/Alle bestanden" aan zodat alle soorten bestanden worden weergegeven in de locatie waar u kopie heeft opgeslagen:



Selecteer het juiste bestand:



U klikt op de knop “Volgende/Next”:





Hier vult u uw "Wachtwoord /Password" in en kies voor Next:

Certificate Import Wizard

**Password**

To maintain security, the private key was protected with a password.

Type the password for the private key.

Password:

Enable strong private key protection. You will be prompted every time the private key is used by an application if you enable this option.

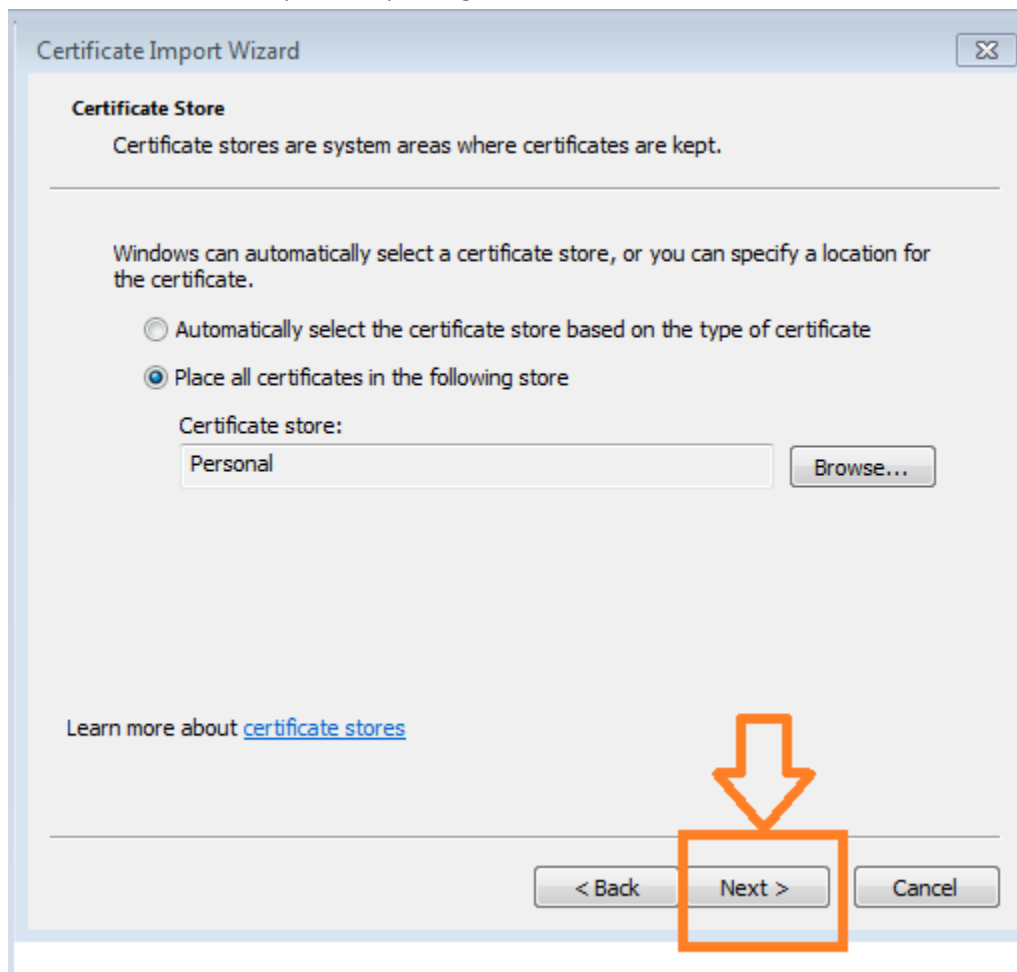
Mark this key as exportable. This will allow you to back up or transport your keys at a later time.

Include all extended properties.

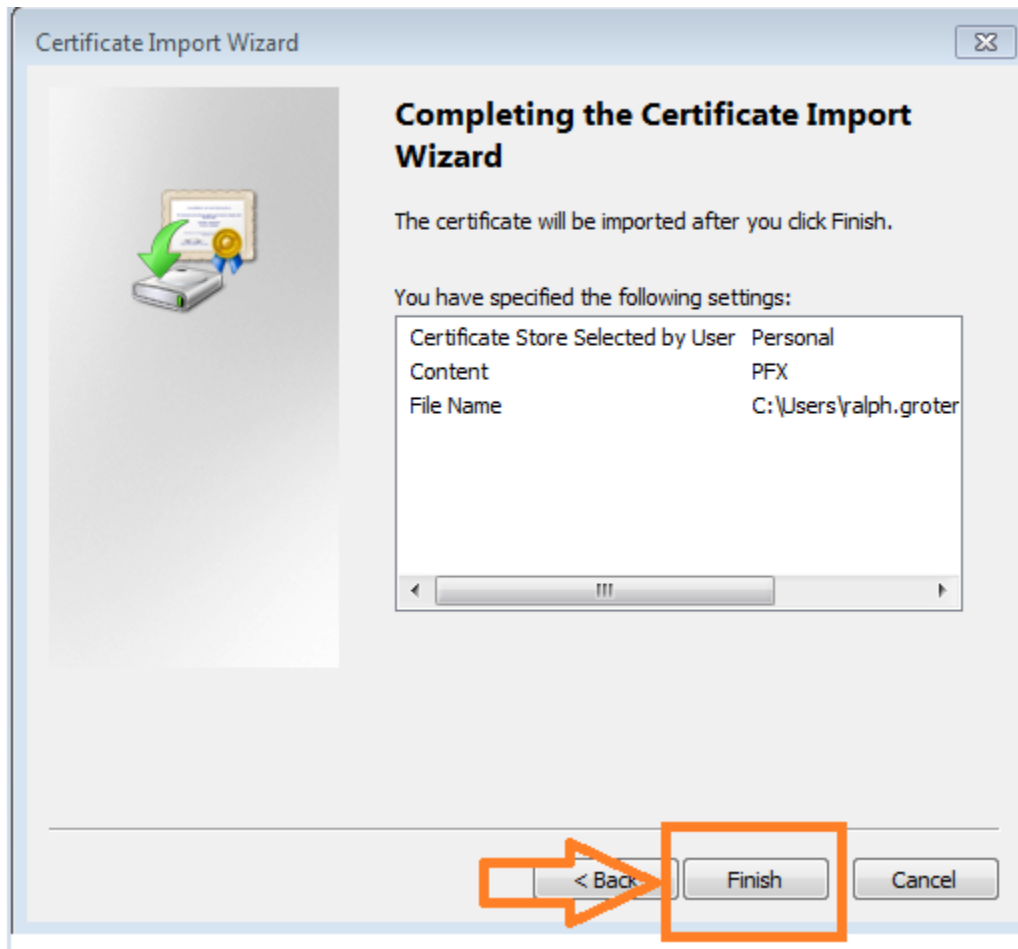
Learn more about [protecting private keys](#)

< Back   Next >   Cancel

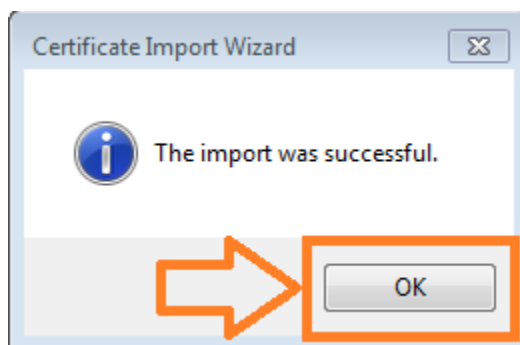
Klik in dit scherm ook op de knop “Volgende / Next”:



U klikt op voltoeien “finish”:



U klikt op OK:



Het certificaat is in tabblad "Personal/Persoonlijk" geplaatst:

